



# Electricals

## **Key Area:**

**E & I Contractor (Green Field,Brown Field)**

**E & I Maintenance Contract (ARC, Manpower)**

**E & I Modification Work**

**Power & Control Panel Manufacturar and Suppliers**

**Electrical material suppliers (Projects, Maintenance)**

**Electrical equipment, Earth pit testing**

# Our Story

**F**ounded in 2018 in Bharuch City, Gujarat, Alden Electricals set its foot as an electrical supply and equipment trading and services company.

Over the years, the company has earned a reputation for excellence and professionalism for continuously striving to meet standard which set the climate for a sustainable business relationship with its clients.

A step towards an electrical solution. We carry out all accepts electrical products, **Instrument material** Electrical Cables, Electricals Motors, AC Drives, DC Drives, Electrical Panels, Switchgear, Cable Gland, Cable Tray, Lugs, LED Lights, soft starters, UPS, AVR, batteries, variable Frequency drive, etc.

Our team is composed of technically skilled and highly dedicated persons working consecutively to promote value- added solutions with a competitive pricing structure to suit your needs.

We are also engaged in electrical product installations, testing and commissioning, preventive maintenance and energy saving solutions. Our commitment is to deliver outstanding results that willexceed your expectations.

We look forward to providing our services and products to your company. Rest assured that we live by our service commitment: Delivering Results,Exceeding Expectations.





# Mission

**A**lden Electricals firmly believes that electricity is the cornerstone of a high-quality life. There will be a never-ending need for products and services to harness and maximize its full potential and use. In doing so, we will be the best-in-class provider of topnotch electrical products and services.

We Recognized / Provide Service by:

- GAIL (Gas Authority of India Ltd)
- IOCL (Indian Oil Corporation of India Ltd)
- Ajanta Pharma Ltd
- Grasim Industries Ltd (Aditya Birla Group)
- Deepak fertilizers and petrochemical Ltd.
- NOCIL Ltd
- Reliance Industries Ltd.
- Thyssenkrupp Industries India Ltd
- Powerband Industries Ltd
- YOKOGAWA India Ltd
- Balmer Lawrie – Van Leer Ltd
- GACL Ltd

We Recognized / Provide Material supply services by:

- GAIL (Gas Authority of India Ltd)
- Ajanta Pharma Ltd
- Grasim Industries Ltd (Aditya Birla Group)
- Deepak fertilizers and petrochemical Ltd.
- Thyssenkrupp Industries India Ltd
- Powerband Industries Ltd
- ONGC Ltd
- Valiant Organics Ltd (Aarti Group)
- GeM

# Quality Brands

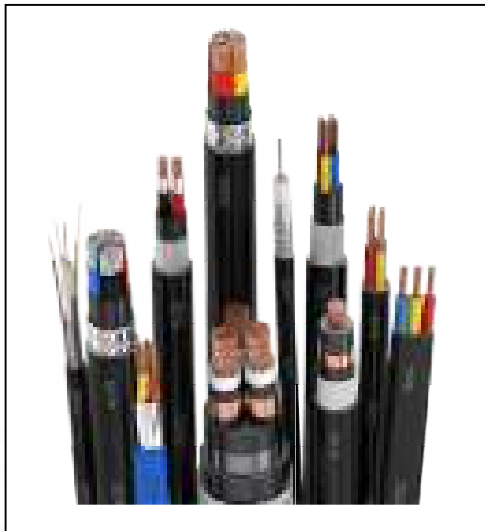




# PRODUCTS

- Electricals Cables and Wires
- All Types of Cable Trays
- Cable Gland, Lugs and its accessories
- Switchgear
- Panels Accessories and Panel
- Copper /Gi Earth Rods and Plates – Chemical
- Cable Tie, PG Gland
- Cable joint Kit and Sleeve LT/HT
- LED Light Fittings
- Electricals Motors
- All Type of Fans, Switch boards and accessories
- GI Earth Strips
- Measuring Tools
- Instrumentation Materials

➤ **Electricals Cables and Wires**



**Cables**



**Wires**

➤ **Cable Trays**

**Finishing:** Hot-Dip G.I , Electro Plating G.I , Powder Coated , Painted.



**Perforated Cable Tray**



**Ladder Type Cable tray**



**FRP Cable Tray**



## ➤ Lugs and Cable Gland



**Insulated Lug**



**Tubular lug**



**Aluminium Lug**



**Inline Connector Lug**



**Pin type Lug**



**Fork type Lug**



**Tubular Type Lug**



**Bimetallic Lug**



**Crimping Tool**



**Double Compression Cable Gland**



**Brass Cable Gland**



**PG Cable Gland**

## ➤ Switchgear



**MCB**



**Earth Leakage CB**



**RCCB**



**Fuse Links**



**Rotary Switch**



**Change Over Switch**





**Overload Relays**



**MCCB**



**Switch Fuse Unit**

### ➤ Panel Accessories



**Push Button**



**Heat Shrink Sleeves**



**Limit Switch**



**Plastic tie**



**Panel Board Accessories**

➤ Earth Rods and Plates



**Hot Dip GI Earthing Rod**



**Flat in Pipe Coated Earthing**



**Copper Solid Rod**



**GI Pipe Earthing Flat Electrode**



**Copper Coated Earthing Electrode**



## ➤ Cable Tie



Plastic/ Nylon Self Locking Cable Tie : ( Size: 50, 100, 150, 200, 250, 300, 350 , 400, 450, 500 )

## ➤ Proximity Sensor



Proximity Switch



Types of Proximity Switch

➤ Cable joint Kit



**Low Voltage Joints**



**Low Voltage Termination**



**Medium Voltage Joints**



**Medium Voltage Termination**



## ➤ LED Fittings



**LED Flood Light**

**Wattage: 25 W, 50 W, 75 W, 90 W, 120 W, 150 W, 170 W, 200 W, 250 W, 300 W, 400 W)**

**LED Street Light**

**LED High-Bay Light**



**Tube light**



**LED Street light (Lens Model)**



**POP Light( Round/Square)**

## ➤ Electricals Motors

### ➤ LT MOTORS – AC INDUCTION MOTORS



#### **IE2 Efficient Motors :**

- Range : 0.37 KW to 250 KW
- Conforming to IEC 60034-30-2008 and IS 12615-2011
- Flange , Foot and Face Mounting Motors

#### **IE2 Efficient Motors**



#### **EFT 1 Energy Efficient Level -1 Motors :**

- Range : 0.37 KW to 160 KW
- Squirrel Cage Motor Conforming to IEC and IS Standards.
- Flange , Foot and Face Mounting Motors
- Pole: 2 P, 4 P, 6 P, 8 P
- 2 to 6 % more efficient than the Standard Motor.

#### **Energy Efficient Motor**



#### **GD Series**

- Range: 0.18 KW to 11 kW
- Frame in 63 to 132 Aluminum Body
- Multi-mount Facility (i.e. right, left or top mounted terminal box position can be obtained by simply changing the position of foot)
- Pole: 2 P, 4 P, 6 P, 8 P

#### **GD Series**





### **ND Series :**

- Range: 0.37 KW to 325 KW
- Squirrel Cage and Slipring Motors.
- Flange , Foot and Face Mounting Motors
- Pole: 2 P, 4 P, 6 P, 8 P

### **ND Series**

### **➤ Crane Duty Motor**



### **Crane Duty Motor :**

- Cast Iron Slip Ring Crane Duty Motors in 112 to 400 frame.
- Squirrel Cage Motors in Cast Iron Enclosure is from 80 to 400 and in Aluminum enclosure is from 63 to 160.

### **➤ FHP Single Phase Motor**



### **FHP Single Phase Motor**

Application :

Exhaust Fan

Blower

Chiller Unit

Condensor Unit

## ➤ Industrial Pump



End Suction Pump



Vertical Multistage Pump



Horizontal Multistage Pump

## ➤ All Type of Fans



Industrial Fan

Air Circulators Wall Mounted

Single Phase

Size: 18"24"30"



Industrial Fans

Air Circulators

Pedestal

Singles Phase

Size: 18"24"30"



Heavy Duty Exhaust Fan Single Phase

Size : 12"15"18"24"30"



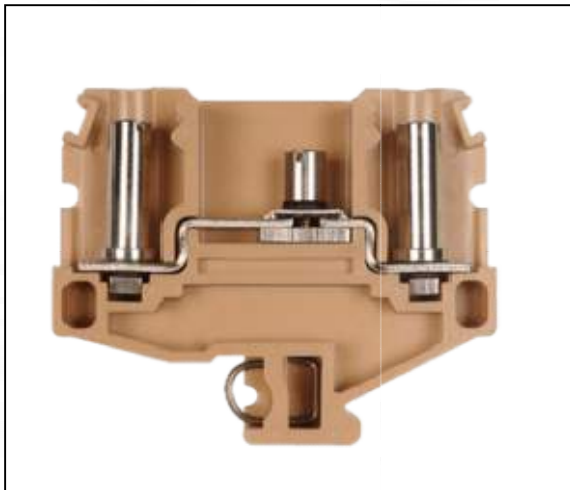


Domestic Fans



Ceiling Fans

### ➤ **Elmex terminal**



### ➤ **Elmex terminal**



- Earth terminal
- Multi level terminal (double deck)
- Multi level terminal (triple deck)
- Cut n series Stud type terminals
- Fuse terminals
- Disconnecting terminals
- Power terminals
- Power (bus bar) terminals (scheduled)
- Earth terminals
- Spring loaded feed through terminals
- Feed through terminals (cut n series)
- Spring loaded terminals (melamine)
- Stud type terminals (melamine)
- Feed through terminals (melamine)
- Lighting pole
- Pcb connectors
- U series terminals

# Other Products

- Wiring Accessories (Switches, Convenience Outlets, Dimmers)
- Lighting for Commercial and Industrial Application
- Low Voltage Apparatus
- Low/Medium/High Voltage Switchgears
- Substation Equipment's
- Lightning Arresters
- Grounding System and Equipment
- Power and Distribution Panels
- Manual & Automatic Transfer Switches
- Cable Trays and Wire ways
- Preventive Maintenance of Transformer, Switchgears and other Electrical Equipment
- Testing of electrical equipment's, Earth Pits, Plant Grid etc
- Instrumentation projects and maintenance work
- Trading of all electricals and instrumentation related items



# Clients

OUR CLIENTS SATISFACTION IS OUR MOTTO



Oil and Natural Gas Corporation Ltd.